

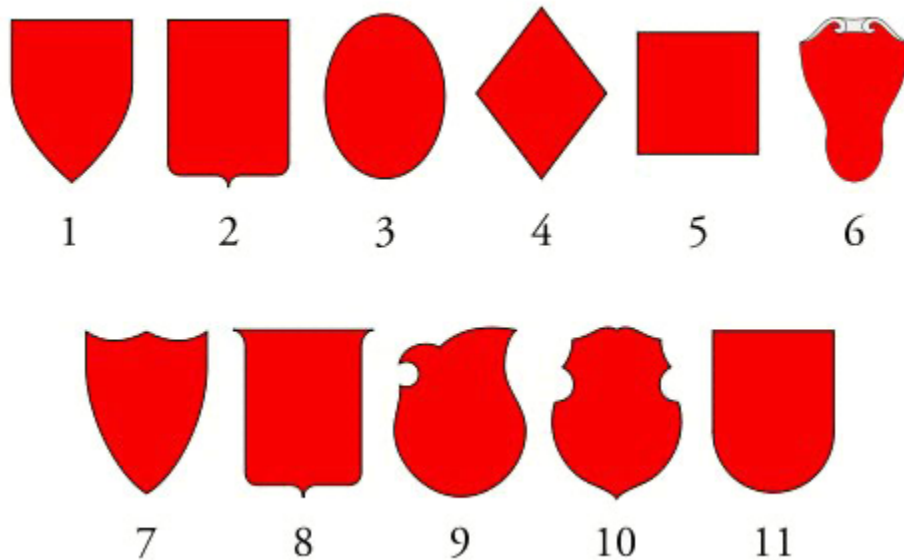


Personal Crest Unit

PERSONAL CREST UNIT

In making your personal crest, research the images you need to use. The Crest requires you use a shield, a banner, an animal, objects that can be held in the hand, and a hat or helmet.

1. Follow class directions on designing a shield shape. Fold a piece of paper in half and cut out a symmetrical shape that will go behind all the other parts of your composition

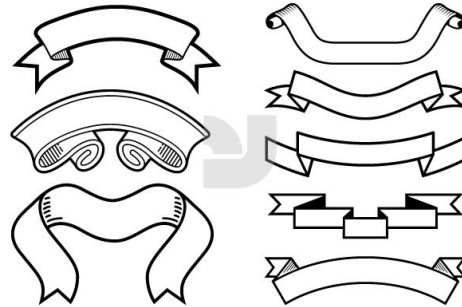


You need not choose one of these, they are only examples.

2. When you have found a shape for your shield, trace around it for the shape and fit a banner with a motto somewhere in your composition. The motto is what you will have on your shield as you ride into battle (life) so make it something that you believe or something that really represents you.



Personal Crest Unit



You can experiment with the shape of the shield, but simple is always better because later on, you will fit many other interesting images onto and around the shield.

3. When you have completed the main shapes in your crest composition, research several versions of the following items:
 - a. Hats or head gear. In the Middle Ages, it would be a warrior helmet. What you wear on your head in this assignment, is what represents the way you think. Put the images of a hat that is symbolic of you. Put the hats you choose in your research notebook and do practice drawings of them.



You can put any kind of hat or headgear that you want for this part of your design.

- b. An animal should be chosen. Choose an animal that you want as a protector, or an animal that represents your nature—or an animal whose qualities you admire.



Personal Crest Unit



www.shutterstock.com - 48352792



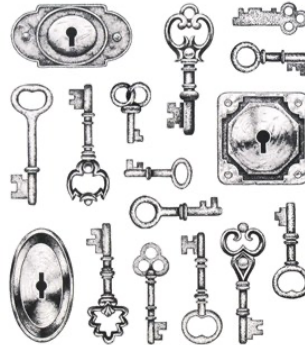
©Seamartini Graphics * illustrationsOf.com/1113559



www.shutterstock.com - 179713106

You can use a real animal or a magical one.

- c. Choose an object that would be held in your hand. In the middle ages, weapons were often used to represent the knights that wielded them. The only weapons forbidden in this unit are guns. This is just because guns and school is a sore subject these days. If you look at the examples, you can see that often girls chose to use flowers as objects. Boys used things like crossed hockey sticks and baseball bats. Some students preferred to show musical instruments or objects that were part of their daily life.

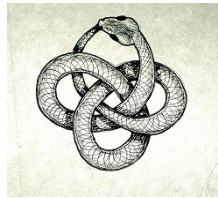


The object you choose for something you could hold in your hand can be a weapon, a flower, a key, a hockey stick. It just must be something with symbolic meaning for you.



Personal Crest Unit

- d. You can include any symbols that could represent you. Look at the other student examples to see how they did this part. Some of them included a flag. Some included maps of where they were from as part of their shield design.



4. All of this research should be saved and then put into your research notebook. You should have several images of different animals, different objects, hats, and symbols that you might like to use. It is important that you have more than one of each different category. Have more than one animal idea, more than one hat, and different ideas for an object that can be hand-held. Do not take the first idea you have without experimentation and deeper thinking. Research means that you think of several solutions at once and experiment with different ideas.
5. You can also add objects like flowers or plants, ornamental elements, or perhaps a musical instrument.